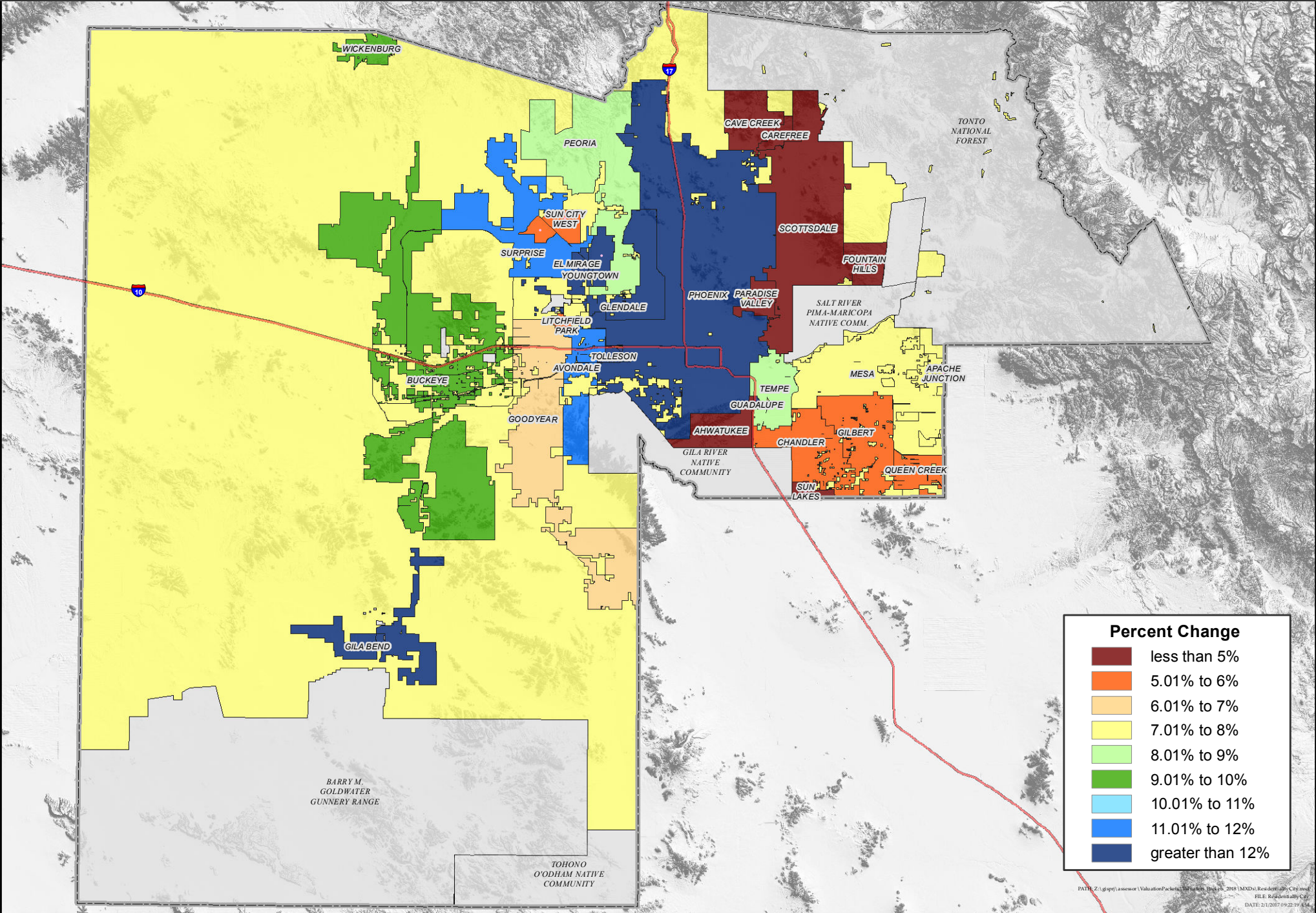


MARICOPA COUNTY RESIDENTIAL FULL CASH VALUE PERCENT CHANGE BY MUNICIPALITY

Tax Year 2018

Paul D. Petersen



Percent Change	
	less than 5%
	5.01% to 6%
	6.01% to 7%
	7.01% to 8%
	8.01% to 9%
	9.01% to 10%
	10.01% to 11%
	11.01% to 12%
	greater than 12%