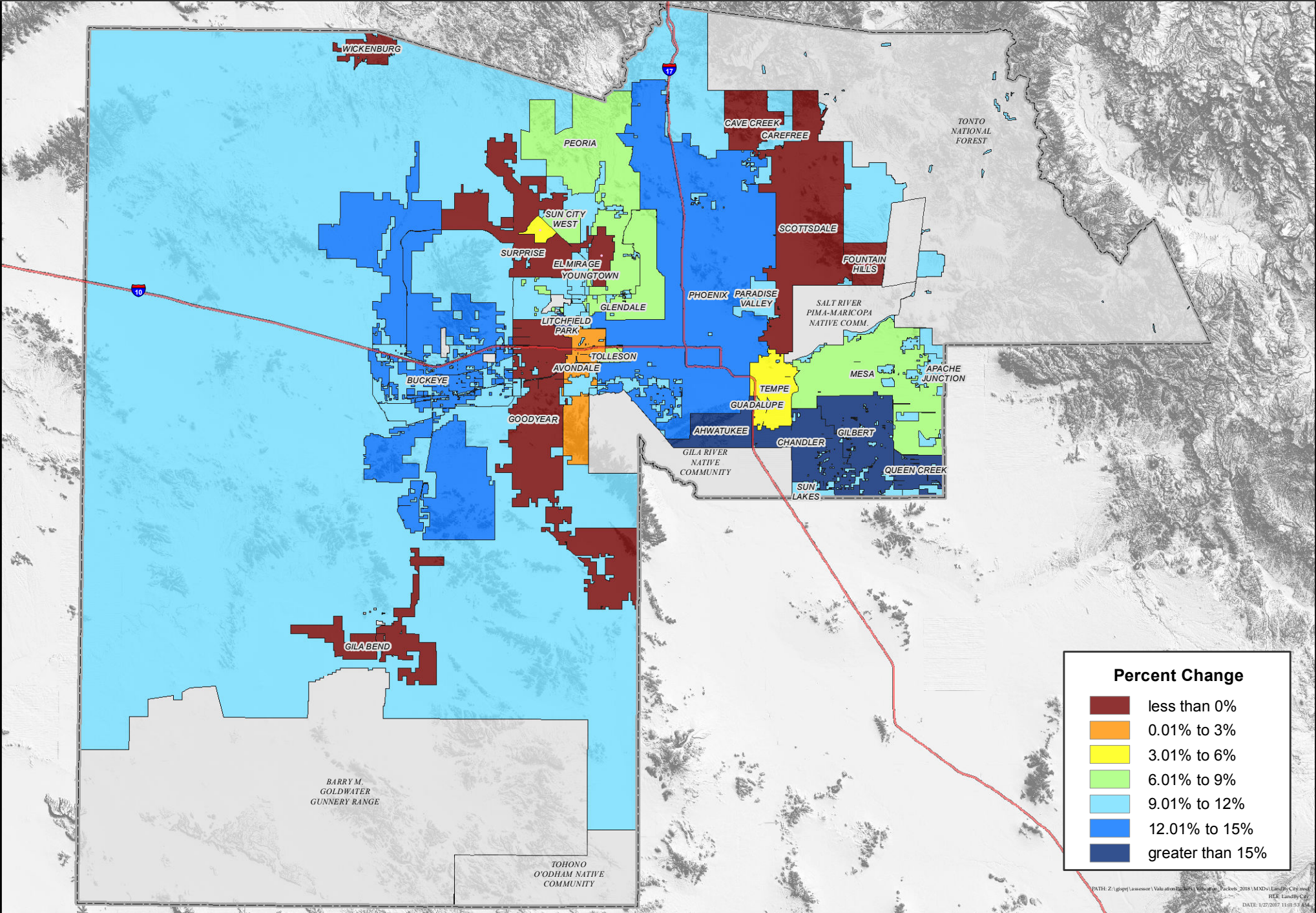


# MARICOPA COUNTY LAND FULL CASH VALUE PERCENT CHANGE BY MUNICIPALITY

Tax Year 2018

Paul D. Petersen



Percent Change	
<span style="display:inline-block; width:15px; height:15px; background-color:darkred;"></span>	less than 0%
<span style="display:inline-block; width:15px; height:15px; background-color:orange;"></span>	0.01% to 3%
<span style="display:inline-block; width:15px; height:15px; background-color:yellow;"></span>	3.01% to 6%
<span style="display:inline-block; width:15px; height:15px; background-color:lightgreen;"></span>	6.01% to 9%
<span style="display:inline-block; width:15px; height:15px; background-color:lightblue;"></span>	9.01% to 12%
<span style="display:inline-block; width:15px; height:15px; background-color:blue;"></span>	12.01% to 15%
<span style="display:inline-block; width:15px; height:15px; background-color:darkblue;"></span>	greater than 15%