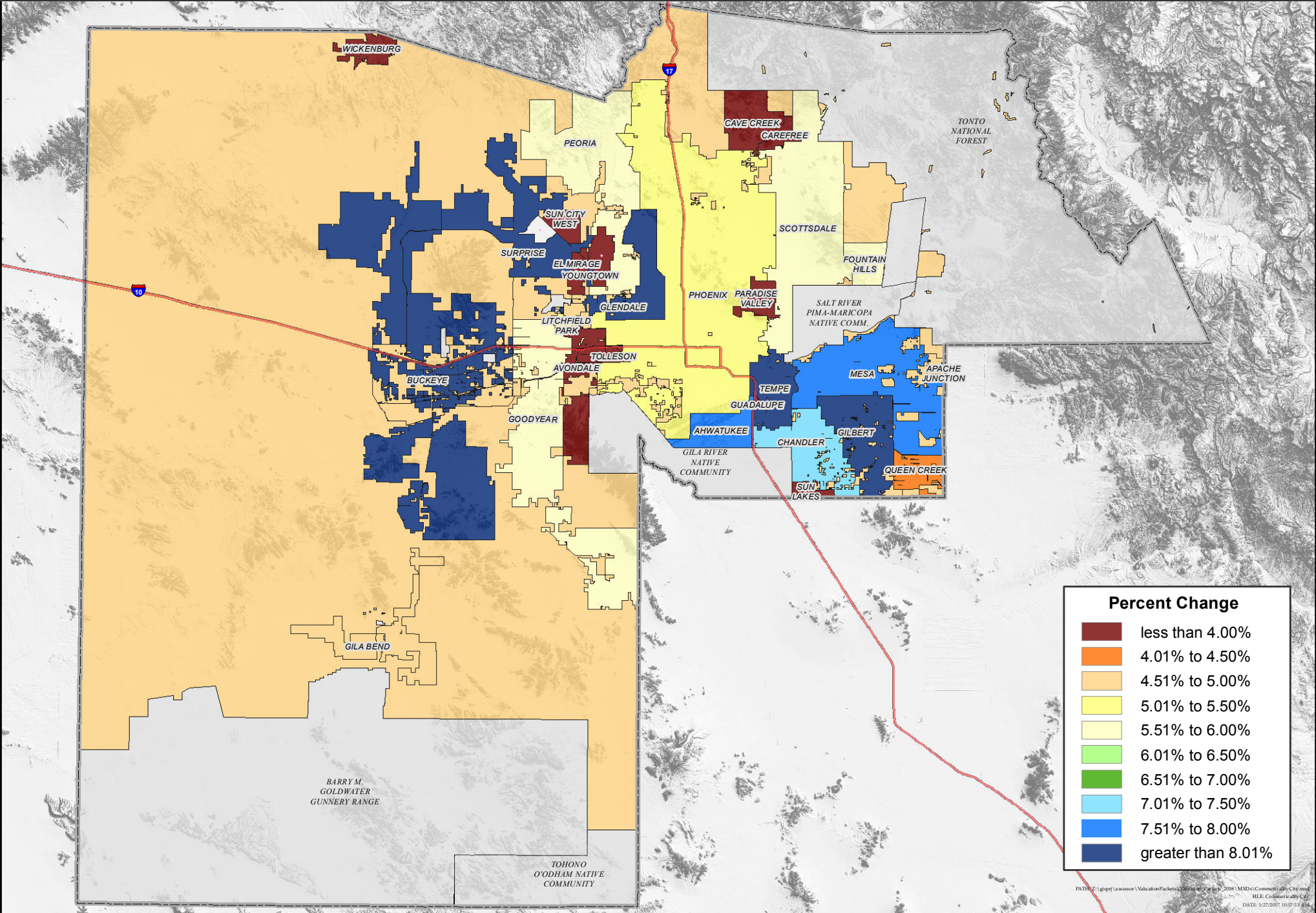


MARICOPA COUNTY COMMERCIAL FULL CASH VALUE PERCENT CHANGE BY MUNICIPALITY

Tax Year 2018

Paul D. Petersen



Percent Change	
	less than 4.00%
	4.01% to 4.50%
	4.51% to 5.00%
	5.01% to 5.50%
	5.51% to 6.00%
	6.01% to 6.50%
	6.51% to 7.00%
	7.01% to 7.50%
	7.51% to 8.00%
	greater than 8.01%