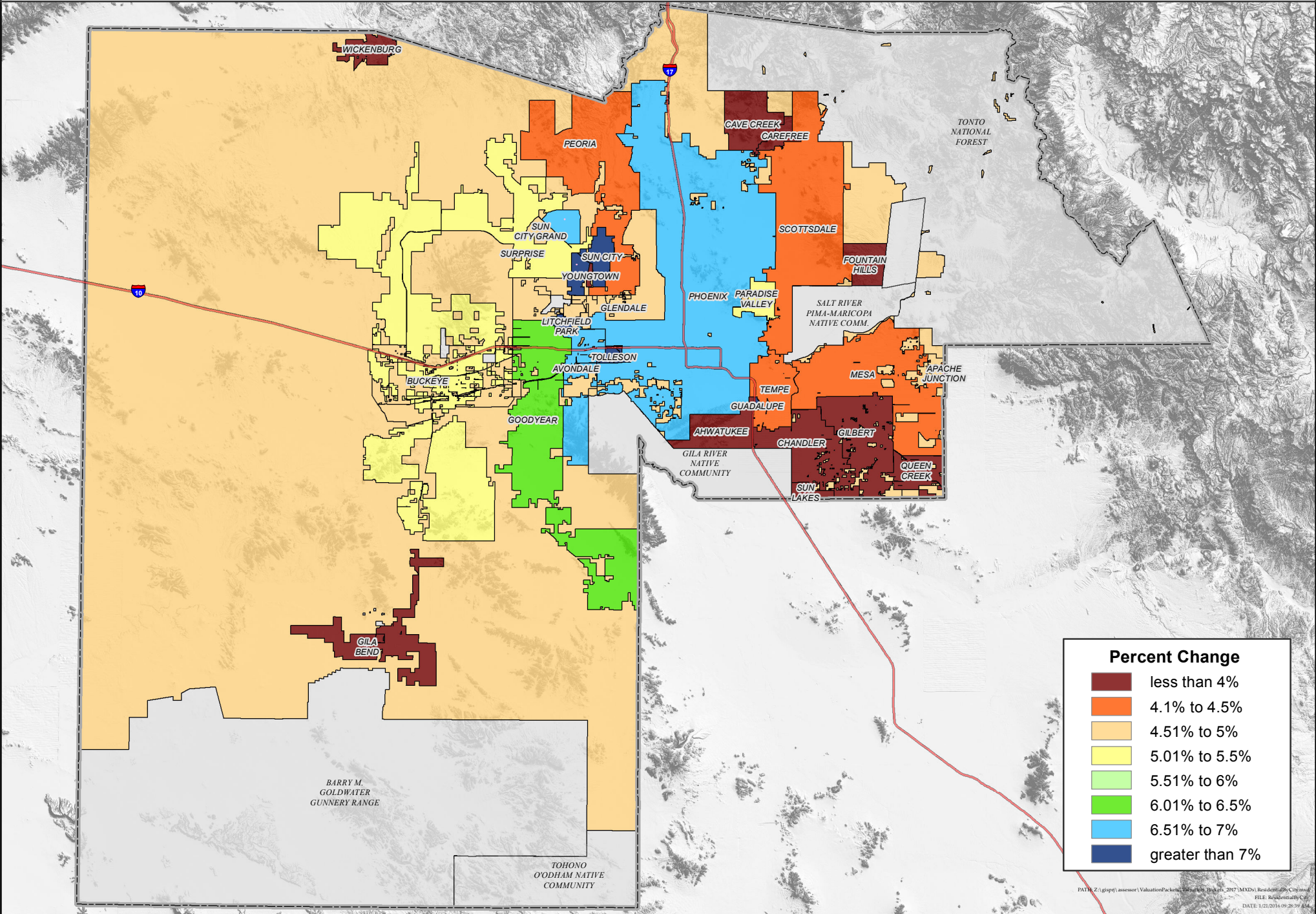


# MARICOPA COUNTY RESIDENTIAL FULL CASH VALUE PERCENT CHANGE BY MUNICIPALITY

Tax Year 2017

Paul D. Petersen



**Percent Change**

- less than 4%
- 4.1% to 4.5%
- 4.51% to 5%
- 5.01% to 5.5%
- 5.51% to 6%
- 6.01% to 6.5%
- 6.51% to 7%
- greater than 7%