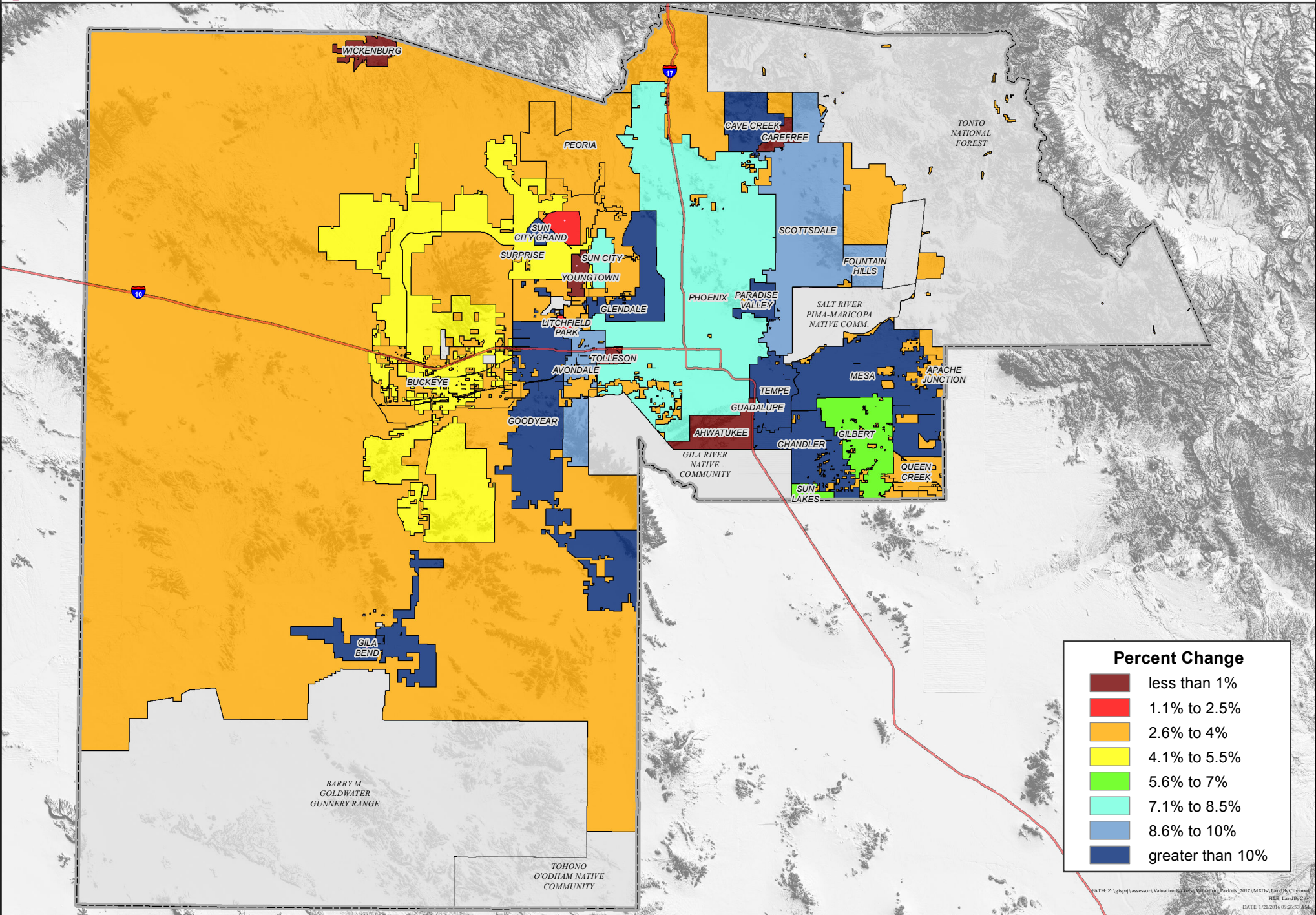


MARICOPA COUNTY LAND FULL CASH VALUE PERCENT CHANGE BY MUNICIPALITY

Tax Year 2017

Paul D. Petersen



Percent Change	
less than 1%	less than 1%
1.1% to 2.5%	1.1% to 2.5%
2.6% to 4%	2.6% to 4%
4.1% to 5.5%	4.1% to 5.5%
5.6% to 7%	5.6% to 7%
7.1% to 8.5%	7.1% to 8.5%
8.6% to 10%	8.6% to 10%
greater than 10%	greater than 10%