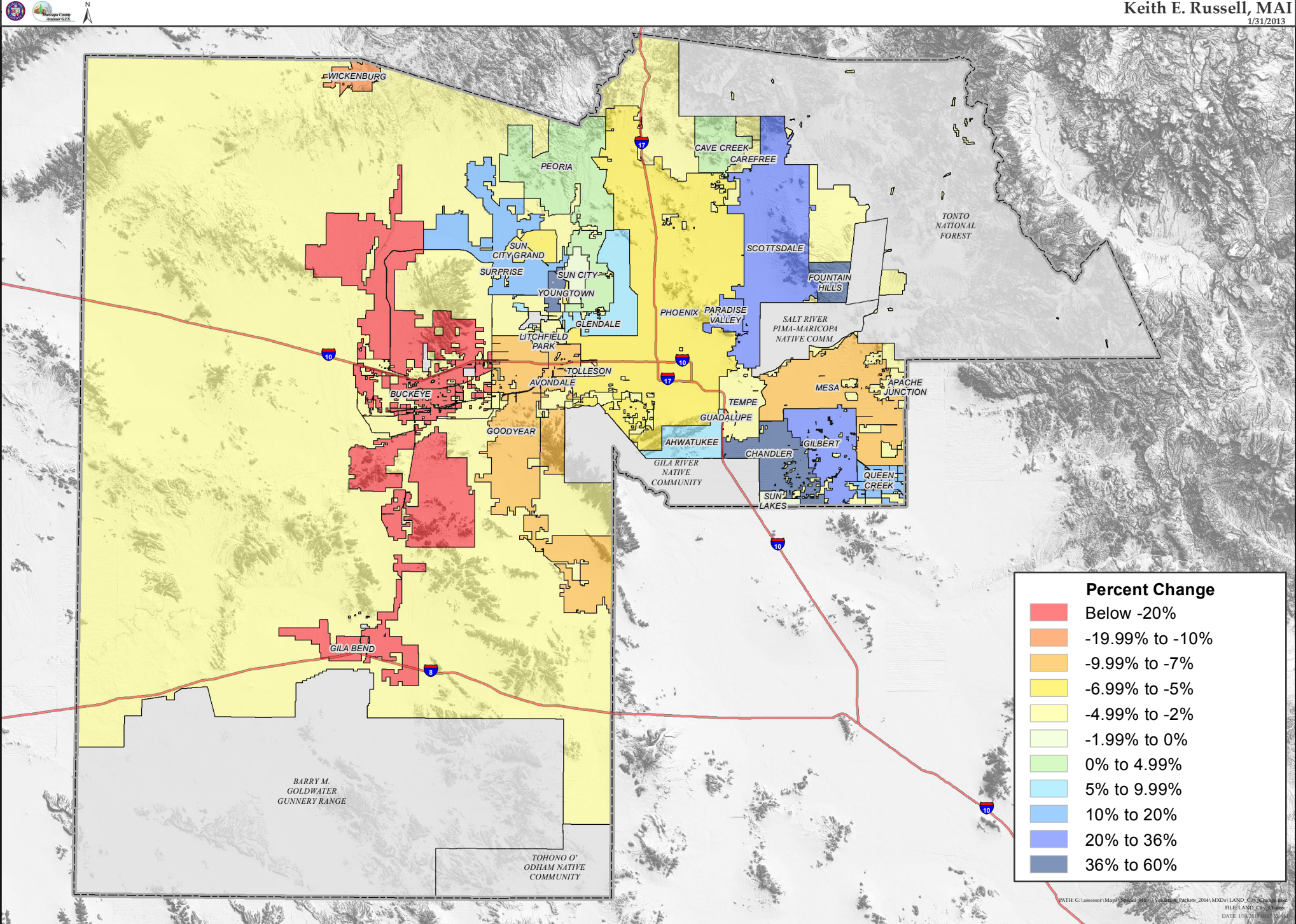


MARICOPA COUNTY VACANT LAND FULL CASH VALUE PERCENT CHANGE BY MUNICIPALITY

Tax Year 2014

Keith E. Russell, MAI
1/31/2013



Percent Change	
Red	Below -20%
Orange	-19.99% to -10%
Light Orange	-9.99% to -7%
Yellow	-6.99% to -5%
Light Yellow	-4.99% to -2%
Pale Yellow	-1.99% to 0%
Light Green	0% to 4.99%
Light Blue	5% to 9.99%
Blue	10% to 20%
Dark Blue	20% to 36%
Very Dark Blue	36% to 60%