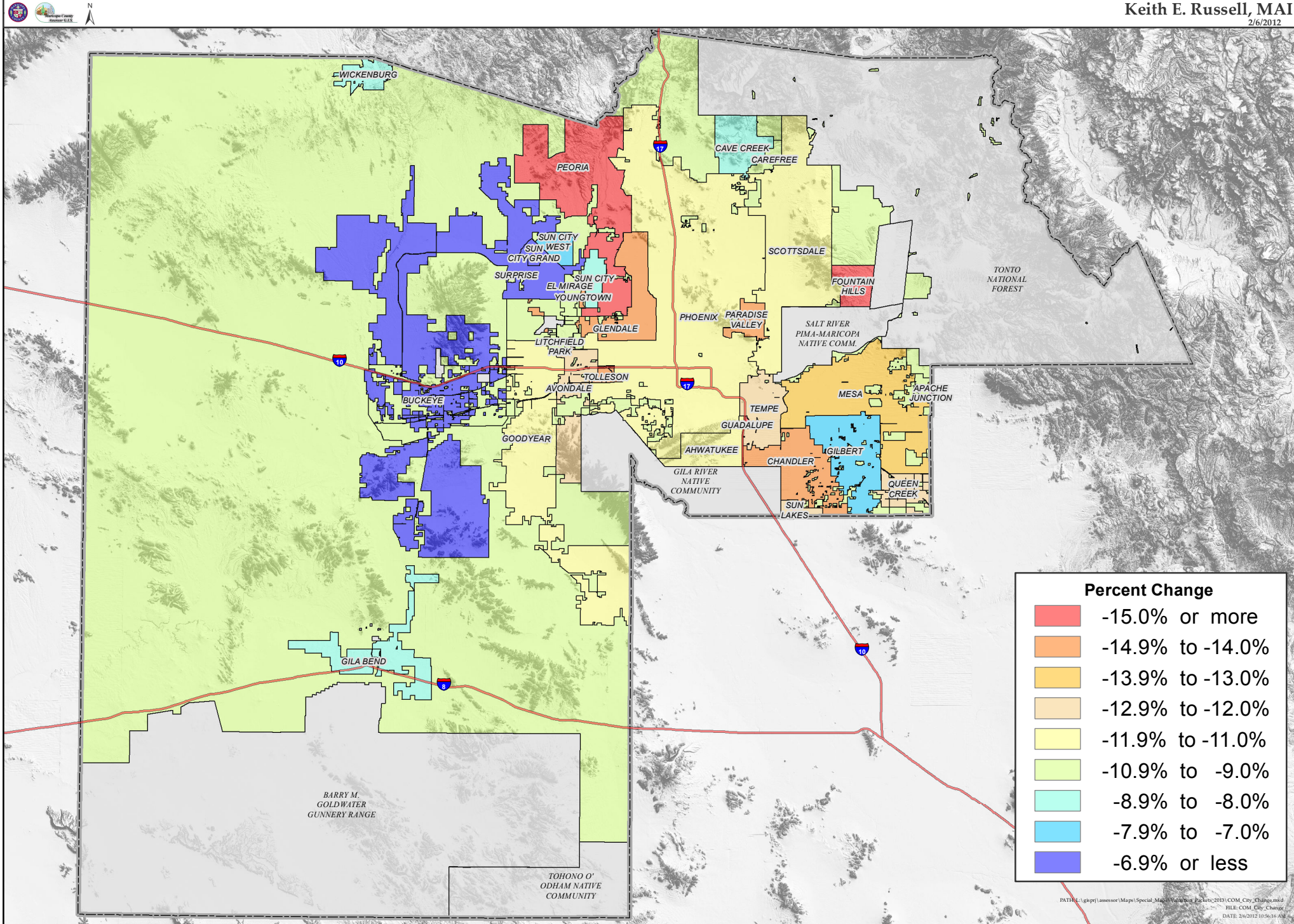


MARICOPA COUNTY COMMERCIAL FULL CASH VALUE PERCENT CHANGE BY MUNICIPALITY

Tax Year 2013

Keith E. Russell, MAI
2/6/2012



Percent Change	
■	-15.0% or more
■	-14.9% to -14.0%
■	-13.9% to -13.0%
■	-12.9% to -12.0%
■	-11.9% to -11.0%
■	-10.9% to -9.0%
■	-8.9% to -8.0%
■	-7.9% to -7.0%
■	-6.9% or less

PATH:\a\gprj\assessor\Maps\Special_Maps\Value_Watch_Peoria_2013\COM_City_Change.mxd FILE: COM_City_Change DATE: 2/6/2012 10:56:16 AM